

Mechanical Truck Scale

Models 8130 & 8140



Amendment Record

MECHANICAL TRUCK SCALE

MODELS 8130 AND 8140

SERVICE MANUAL

Document 50726

Manufactured by **Thurman Scale**
4025 Lakeview Crossing
Groveport, Ohio 43215

Created	8/2003	
Issue #1	8/2003	
Issue #2	4/2004	
Revision 3	4/2012	Added scale updates and product improvement information.
Revision 4	8/2018	Updated Scale Installation section > Scale Prep; Maintenance > Introduction

Disclaimer

Every effort has been made to provide complete and accurate information in this manual. However, although this manual may include a specifically identified warranty notice for the product, Thurman Scale makes no representations or warranties with respect to the contents of this manual, and reserves the right to make changes to this manual without notice when and as improvements are made.

Thurman Scale shall not be liable for any loss, damage, cost of repairs, incidental or consequential damages of any kind, whether or not based on express or implied warranty, contract, negligence, or strict liability arising in connection with the design, development, installation, or use of the scale.

© Copyright 2003-2018 Thurman Scale Inc.

This document contains proprietary information protected by copyright. All rights are reserved; no part of this manual may be reproduced, copied, translated or transmitted in any form or by any means without prior written permission of the manufacturer.

Table of Contents

SECTION 1: GENERAL INFORMATION	4
1.1. Product Description.....	4
1.1.1. <i>Standard Sizes</i>	5
1.1.2. <i>Capacities</i>	5
1.1.3. <i>Accuracy</i>	5
SECTION 2: SCALE INSTALLATION.....	6
2.1. Foundation Prep & Construction	6
2.2. Installing the Main Levers	7
2.3. Installing the Weighbridge Modules	9
2.4. Installing the Backbone Pipe and Levers.....	11
2.5. Ball Block Alignment	13
2.6. Installing the Load Cell Pillars	14
SECTION 3: CALIBRATION	15
3.1. Initial Zero and Span Adjustments	15
3.2. Repeatability and Return to Zero Performance Test	15
3.3. Section Test and Adjustment.....	16
3.4. Digital Indicator and Span Calibration	17
SECTION 4: MAINTENANCE.....	18
4.1. VISUAL INSPECTION	18
4.2. CLEANING	19
4.3. LUBRICATION	19
4.4. REPLACE WEAR PARTS.....	20
4.5. CALIBRATION	20
SECTION 5: PARTS.....	21
5.1. Parts List	21
5.2. Parts Diagrams	22
5.3. Corner & Fulcrum Stand Parts List.....	23
5.4. Corner & Fulcrum Stand Parts Diagram.....	24
5.5. Connection Box Parts List	25
5.6. Connection Box Parts Diagram	25
5.7. Load Cell Assembly Parts List.....	26
5.8. Load Cell Assembly Parts Diagram	26
APPENDIX I: PHOTOS FROM A COMPLETED SITE	27

Section 1: General Information

1.1. PRODUCT DESCRIPTION

The **Model 8130** and **8140 S.A.M.** (**S**ide **A**rm **M**echanical) is a uniquely designed truck scale, combining the reliability of a mechanical lever system with an above grade low profile design.

- The main levers load a connecting backbone pipe which runs parallel to the length of the weighbridge allowing for a shallow approach, pit-less installation.
- The low profile foundation design offers many benefits over the traditional scale pit design including reduced construction costs and simplified maintenance.
- With the scale installed completely above ground, the lever system, suspension components and weighbridge are not subject to the harsh corrosive environment found in a scale pit.
- The weighbridge consists of factory assembled modules.
 - ☐ Each module connects to the adjoining sections with a step hinge.
 - ☐ These step hinges are manufactured using fixtures, assuring fit and eliminating the need for on-site fit-up and field welding.
- **Model 8130** has a field pour concrete deck.
- **Model 8140** has a raised pattern steel deck, allowing the scale to be operational within a few hours after the scale is delivered to the site.
- A single load cell with digital indication may be used with the **Model 8130** and **8140**.



Model 8130 has factory assembled modules for the weighbridge and a field pour concrete deck.



Model 8140 has a pit-less above-ground steel deck, and can be fully operational within hours of delivery.

1.1. PRODUCT DESCRIPTION, CONTINUED

1.1.1. STANDARD SIZES

- Available in **25', 30', 50', 60', 70', 80'** and **90'** *standard* lengths.
- **10', 11', and 12"** *standard* widths.

1.1.2. CAPACITIES

Gross capacities ranging from **40 to 135 tons**, with corresponding CLC capacity of **60K lbs. to 120K lbs.**, are available as standard.

- The sizes and capacities listed are considered standard. Special size and capacities are available to meet individual application requirements.
- Please refer to the data tag located on the weighbridge to determine the capacity of the scale to be installed.

1.1.3. ACCURACY

Designed to meet or exceed **National Institute of Standards, Handbook H-44** requirements for **Class IIIL Devices**.

Section 2: Scale Installation

2.1. FOUNDATION PREP & CONSTRUCTION

1. Select a site which allows easy access to and from the scale, ensuring enough area for straight and level approaches.
 - ☐ The site should have good drainage. Surrounding areas must not drain into or through the scale site.
 - ☐ The soil must have a minimum bearing pressure of **3000 psf**, or as specified on the foundation drawings supplied by Thurman Scale for the scale to be installed.
2. Obtain all necessary permits and licenses prior to beginning construction.

NOTE: *Always check with public utilities to make sure an underground utility is not going to be uprooted during excavation.*

3. Using a transit, sight in and mark with stakes the area where the concrete forms are to be built.
4. Construct forms making sure they are built square, plump and level.
5. Load and compact gravel into the base of the forms if necessary.
6. Cut and position rebar into the forms as per the schedule detailed on the foundation prints supplied by Thurman Scale for the scale being installed.
7. Anchor the foundation with one of the following.
 - a. J-bolts or,
 - b. (Recommended) Expansion anchors, which are drilled into the concrete after it has fully cured.
 - *These are supplied with the scale.*

NOTE: *Thurman Scale recommends using **Phillips Drill (Red Heads) # WS 3484 Expansion Anchors**, recommended because of the flexibility allowed in final positioning of the scale.*

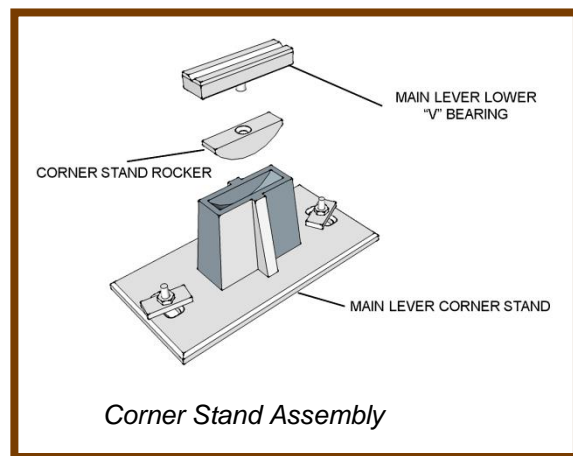
When J-bolts are being used, insert the anchor bolts into their proper positions within the forms, measuring out from the center line of the scale foundation.

2.1. FOUNDATION PREP & CONSTRUCTION, CONTINUED

8. Pour the concrete, using a mix to yield a minimum **4000 psi**, or as specified on the foundation drawing.
9. Vibrate the concrete into position to assure consistency.
 - ☐ All concrete work should conform to standards of the **American Concrete Institute Code**.
10. Before allowing traffic on the scale, allow the concrete to cure for **28 days or until it has reached design strength**, as defined by the foundation drawing provided by Thurman Scale.
11. Remove all the forms and backfill for proper drainage.
 - ☐ A slope away from the scale is recommended.

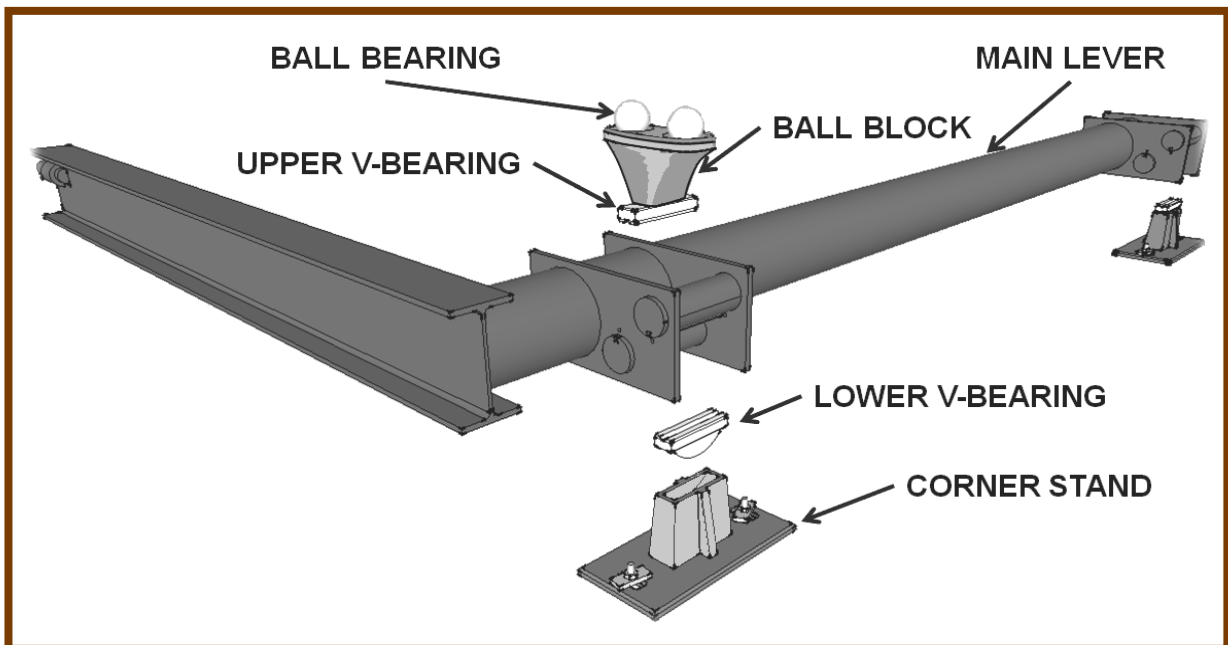
2.2. INSTALLING THE MAIN LEVERS

1. Using a chalk line, mark the foundation to determine the center line of the foundation.
2. With a tape measure, check and install the **Expansion Anchors**.
3. Place the **Main Lever Corner Standards** in position.
 - ☐ Use shims under the corner stands to set elevation.
 - ☐ Install the clamp plates and nuts on to the anchor bolts.
 - ☐ Do not tighten yet.
4. Using high quality lithium-based grease, lubricate and install a **Rocker** into each **Corner Stand**.
5. Install the **Main Lever Lower "V" Bearing** into the **Rockers**.



2.2. INSTALLING THE MAIN LEVERS, CONTINUED

6. Place the **Main Levers** into position on top of the **Corner Stands**.
7. Block the **Torque Arms** of each **Main Lever** into a level position.
 - ☐ Check that the **Torque Arms** are lined up with each other by sighting down the edge of the torque arms.
 - ☐ Adjust the **Corner Stands**, if necessary, to bring the **Torque Arms** into alignment.



8. Set the **Ball Blocks** onto the **Load Pivots** of the main levers.
9. Tilt the **Ball Blocks** so that they lean towards the center of the scale.
10. Lightly grease the **Ball Bearings** and place them into position on the **Ball Blocks**.

2.3. INSTALLING THE WEIGHBRIDGE MODULES

The weighbridge is shipped in one or more connecting modules depending on the total length of the scale.

THREE MODULE TYPES

The three different module configurations are the **Base**, **Intermediate** and the **End**.

- ☐ The **Base Module** has provisions for two main levers.
- ☐ The **Intermediate Module** has connecting hinge plates on both ends of the module and has provisions for one lever.
- ☐ The **End Module** contains hinge plates on only one end and provisions for one main lever.

Place the **Base Module** into position first, followed by an **Intermediate Module(s)**, then the **End Module**.

LENGTH	MODULE NUMBER	TYPE OF MODULES
Up to 30'	1	(1) Base
35' to 60'	2	(1) Base, (1) End
65' to 90'	3	(1) Base, (1) Intermediate, (1) End
95' to 120'	4	(1) Base, (2) Intermediate, (1) End

C A U T I O N

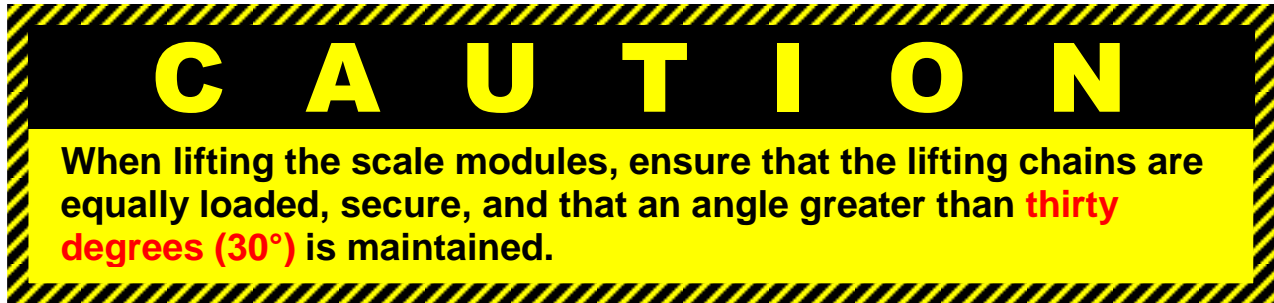
Scale weighbridge modules are **enormously heavy and awkward**.

Exercise extreme care when lifting the modules to avoid personal bodily harm or damage to the equipment.

2.3. INSTALLING THE WEIGHBRIDGE MODULES, CONTINUED

- Using a crane of sufficient size, install the **Base Module** over the **Main Levers**.

☐ There is one left-hand, and one right-hand lever.

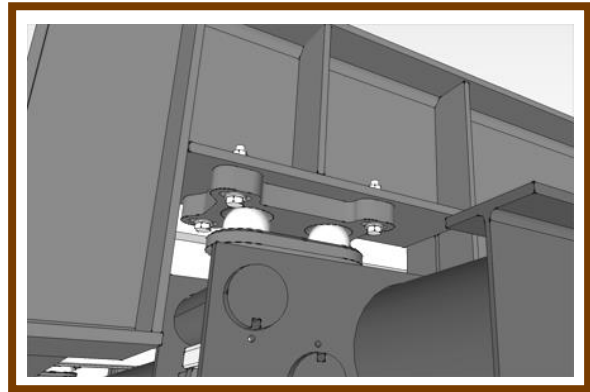


- Carefully lower the **Base Module** onto the **Ball Suspension Assemblies**.

- Check the gap between the end of the module and the approach wall.

☐ This dimension should be equal to half of the difference between the overall foundation dimension and the scale length.

☐ If the measured dimension does not equal the calculated dimension, move the main lever corner stands with a sledge hammer until the gap measurement is correct.



A WORKING EXAMPLE

The overall foundation length was measured at 70' 2". The scale length is 70'. The difference between the two dimensions equals two inches (2"), therefore the gap between the end of the scale and the approach wall should equal one inch (1") on each end.

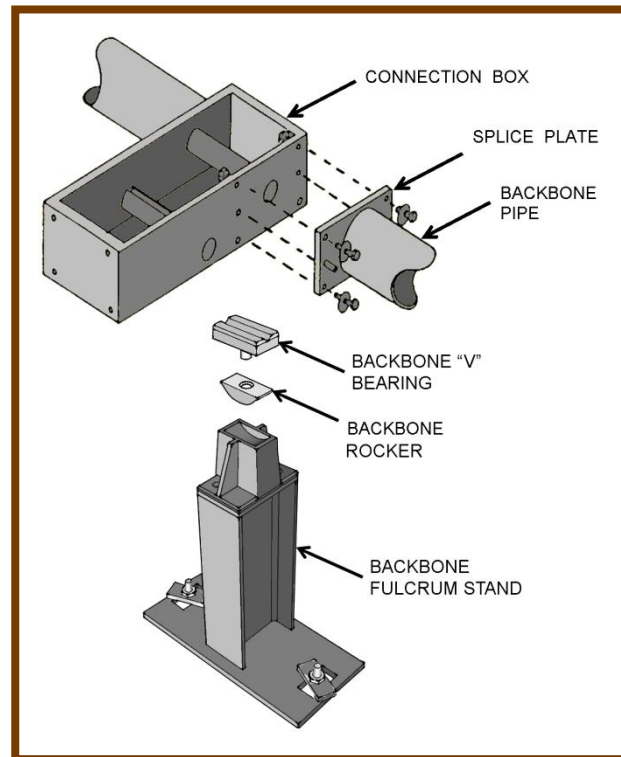
- Remove the lifting chains and attach to the next Module and lower it into place.
- Align the module with the connecting step hinges of the proceeding module and the ball blocks of the main lever.

2.3. INSTALLING THE WEIGHBRIDGE MODULES, CONTINUED

6. While the crane is still attached to the module, insert a bolt into the connection holes.
7. Install the **lock washer** and **nut** onto the bolts, tightening them until snug.
8. Continue lowering the **module** so that it rests on the ball block assemblies.
9. Repeat steps 4-8 until the last module has been placed.
10. Tighten all the **Connection Bolts** to a **minimum of 125ft./lbs.**, up to a **maximum of 175 ft./lbs.**

2.4. INSTALLING THE BACKBONE PIPE AND LEVERS

1. Assemble the **Backbone Pipe** by bolting the **Splice Plate End** of one section of the pipe to a **Connection Box End** of the adjoining section of pipe.
 - The adjoining sections of the backbone pipe are match marked for easy identification.
2. Insert a **bolt** in each connection of the four corner holes of the **Splice Plate**.
3. Install a **lock washer** and **nut** onto each of the bolts.
4. Using a hammer, drive a **dowel pin** into each of the center holes of the splice plates.
5. Tighten the nut to a minimum of **125 ft./lb.**
6. Assemble the **Transverse Lever** to the **Backbone Pipe Connection Box** containing four holes on the outside end of the box.
7. Place the **Backbone Fulcrum Stands** into position.
8. Grease and install the **Fulcrum Stand Rocker**.
9. Install the Fulcrum "V" bearings into the rockers.
10. Place the **Backbone Pipe** on the **Fulcrum Stands**.
11. Block the end of the **Transverse Lever** in a level position.

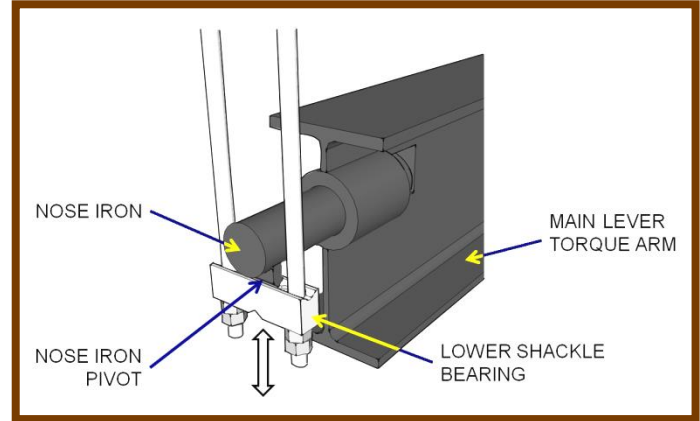


2.4. INSTALLING THE BACKBONE PIPE AND LEVERS, CONTINUED

12. Install the **Shackle Assemblies** between the **Backbone Connection Boxes** and the **Nose Iron** of each of the **Main Levers**.

13. Remove the **blocking** from the **Torque Arms** of the **Main Levers**.

- ☐ The **Top Bearing** of the **Shackle Assembly** should be centered on the **Load Pivot** of the Backbone Pipe.
- ☐ The **Main Lever Pivot** should rest in the center of the **Lower Shackle Bearing**.

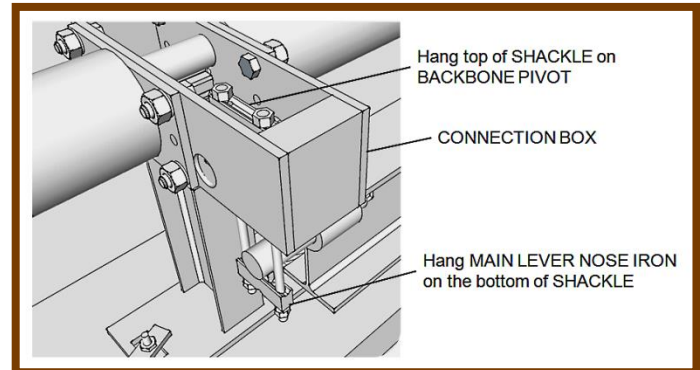


14. Plumb the **Shackle Assemblies** by moving the **Backbone Pipe Fulcrum Stands** and **Main Lever Corner Stands** with a sledge hammer, if necessary.

15. Center the **Pivot** in the **Fulcrum Stand "V" Bearings**.

- ☐ Be certain they do not interfere with the **Anti-friction Buttons**.

16. Tighten all the **anchor bolts** of the **Main Lever Corner Stands** and the **Backbone Pipe Fulcrum Stands**.



17. With the **Transverse Lever** level, place a level on the **Torque Arm** of each lever.

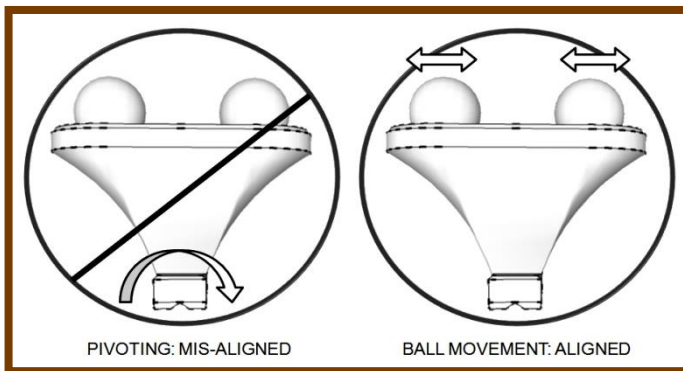
18. Raise or lower the **Bottom Bearing** of the **Shackle Assembly** to bring the **Main Lever** into a level position.

- ☐ Ensure that the distance between the **Top** and **Lower Bearings** of the **Shackle Assembly** is equal on both sides of the assembly.

NOTE: Leave an easy access to the Nose Irons. *This allows for future calibration.*

2.5. BALL BLOCK ALIGNMENT

1. Check each corner to ensure that the **Ball Blocks** and **Ball Plates** are aligned.
2. Rock the **Weighbridge** end-to-end, observing the motion of the ball blocks.



If the **Ball Blocks** and **Ball Plates** are properly aligned, the Balls will move in the cups of the Ball Blocks.

- ☐ The **Ball Block** will not pivot.

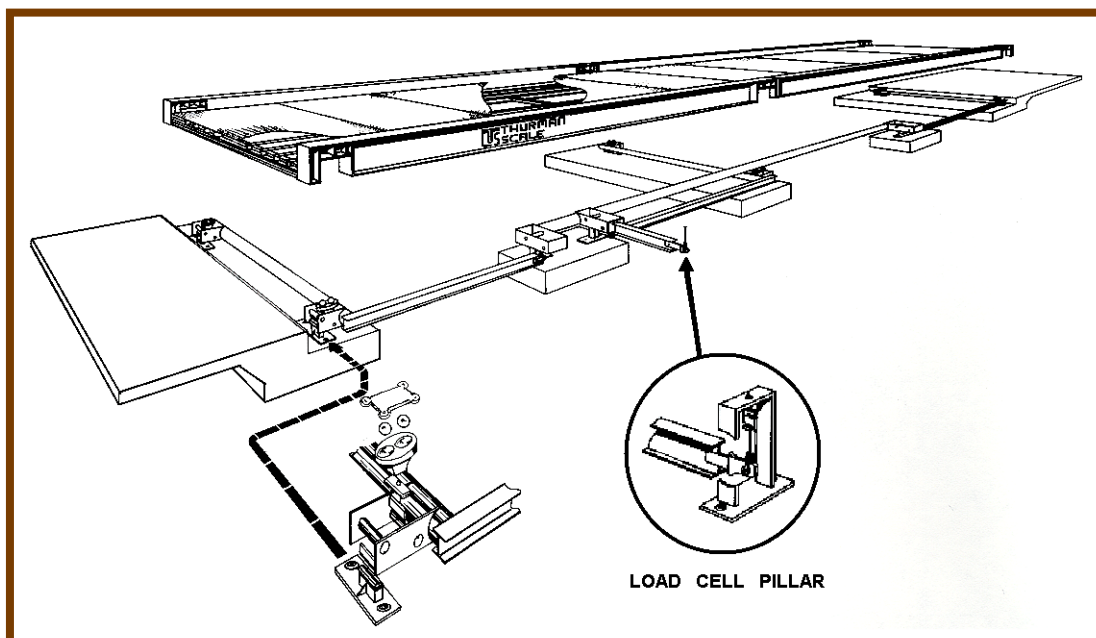
If the **Ball Block** pivots, follow these steps.

3. Loosen the **bolts** holding the **Upper Ball Plate**.
4. Adjust the position of the **Upper Ball Plate** until the excessive pivoting of the **Ball Blocks** is eliminated.
 - ☐ Extreme cases may require the corner stands to be repositioned.
5. Ensure that the **Shackle Assembly** is plumb, and that all other components are realigned prior to calibration.

2.6. INSTALLING THE LOAD CELL PILLARS

The **Model 8130** and **8140 Scales** are **electro-mechanical**, using a load cell connected to the transverse lever.

1. Position the **Load Cell Pillar** in its approximate position.
2. Center the hole in the **Top Bracket** of the **Pillar** over the **Pivot Loop** of the **Transverse Lever**.
3. Assemble the **Load Cell Suspension Hardware** and connect to the **S-Type Load Cell**.
4. Install the **Load Cell Assembly** between the **Transverse Lever** and the **Load Cell Pillar**.
5. Position the **Links** so that they are perpendicular to the **Loops**.
6. Plumb the **Load Cell Assembly** by moving the position of the **Load Cell Pillar**.
7. Secure the **Pillar** into position by using the **Expansion Anchors** supplied in the **Mounting Hardware Kit**.
8. Remove the **Blocking** from the **Transverse Lever**.
9. Place a **Level** on the **Transverse Lever**.
10. Adjust the height of the **Load Cell Assembly** by turning the **Adjustment Nuts** until the **Transverse Lever** is level.
11. Lock the **Adjustment Nuts** in place.



Section 3: Calibration

The **Main Levers** of the **Model 8130** and **8140** have been individually tested and factory sealed for corner accuracy, therefore only minor section, zero and span adjustments will be necessary during the final calibrations.

3.1. INITIAL ZERO AND SPAN ADJUSTMENTS

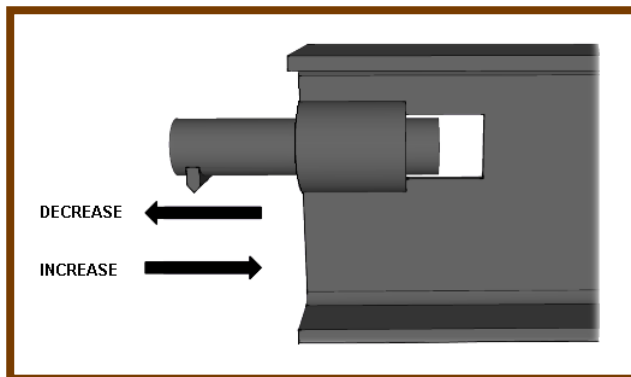
1. Seat the **Suspension Components**.
2. Drive the test truck across the scale, stopping hard momentarily several times across the scale.
3. Repeat this procedure at least **three (3) times** to assure that all parts are properly seated.
4. The **Zero** and **Span** of the scale should be roughly adjusted to check for repeatability and return to zero.
 - ☐ At the first, they do not need to be set perfectly.
 - ☐ Final zero and span adjustments will be performed after all the sections have been fully adjusted.
5. Adjust the coarse **Span** of the indicating device.

3.2. REPEATABILITY AND RETURN TO ZERO PERFORMANCE TEST

1. Position the test truck in the center of the weighbridge.
2. Note the weight reading.
3. Pull the truck off the scale and note the return of zero.
4. Repeat this procedure **at least three (3) times** to assure consistency.
5. If the scale does not repeat the readings, within tolerance, check for mechanical obstructions, or "touches".
6. Also be certain that the scale is assembled properly, and that the lever system is aligned correctly.

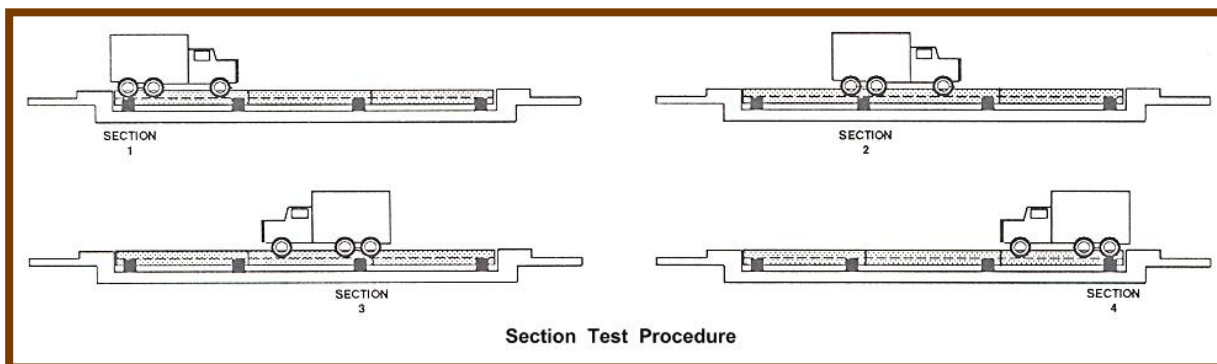
3.3. SECTION TEST AND ADJUSTMENT

1. The section test should be conducted centering the test load over each section.
(i.e., weight cart, block weights, or rear axles of the truck)
2. Write down the **weight indication** of each section.
 - ☐ The sections should be adjusted so that the weight indications of all sections match within the tolerances set forth by the **NIST Handbook H-44**.
3. Adjust a section by moving the **Nose Iron** of the **Main Lever** directly supporting the section requiring adjustment.



Note: Moving the nose iron away from the corner stand of the lever will reduce the weight reading of the section. Conversely, moving the nose iron towards the corner stand will increase the weight reading.

4. Always plumb the connecting **Shackle Assembly** after the **Nose Iron** has been moved.
5. Repeat steps 2-4 until the weight readings of the sections match within tolerance.



3.4. DIGITAL INDICATOR AND SPAN CALIBRATION

1. The **Model 8130** and **8140** may be operated as an electro-mechanical scale with a stand-alone digital indicator by connecting the **Transverse Lever** to a load cell.

IMPORTANT NOTE: *Any time the **Nose Iron** of the **Transverse Lever** has been moved, the **Digital Indicator** needs recalibration.*

2. Perform the final span adjustments, following the digital indicator technical manual as a guideline.

Section 4: Maintenance

Installing a scale known for its structural integrity is the first step to ensuring dependable performance, but even a quality scale must be properly maintained. Preventative maintenance is the most important factor in extending the life of your new truck scale. Depending on traffic volume and environmental factors your scale may require more frequent maintenance. At minimum you should perform a thorough maintenance inspection every six months. It is recommended that you discuss a recommended maintenance plan with your servicing distributor familiar with your particular application.

A properly maintained truck scale will give many years of accurate and reliable service. Periodic maintenance is recommended to keep the scale in top condition.

Maintenance is generally performed by a regular maintenance program that includes: inspections, testing for accuracy with certified test weights, yearly cleaning, close inspection, and greasing. All this work should be performed by an experienced and well-equipped scale service provider like Fairbanks Scales.

Care should always be exercised when driving loads onto the scale, as well as, removing loads from the scale. Trucks should always have a straight approach to the scale, and a straight departure from the scale. Trucks should never perform a turn when any wheels are supported by the scale. Slowly applying loads with slow, steady speeds and the gentle application of brakes will ensure long life and satisfactory performance. Fifth wheel and tandems should NEVER be shifted while on the scale. And the scale understructure should be kept as dry as possible to prolong the life of the steel supporting structure.

4.1. VISUAL INSPECTION

Begin by examining the foundation and approaches for any major structural or surface problems. Cracks that lead to movement or settling will cause chronic calibration errors. Should any deterioration exist, immediate repairs are recommended. Additionally, make sure the foundation is dry and properly drains. Perpetually wet soil conditions can eventually lead to undesired settling of the foundation.

Next, check the deck for rust or crumbling concrete that can weaken the scale's structure. Clean and paint rusted steel, and repair or replace concrete as needed to maintain the scale's structural integrity.

Using a crowbar, check the weighbridge for free movement both with and without a vehicle on the scale. If binding seems to be an issue, check both ends of the deck for clearance. Clean all debris between the end wall and the deck.

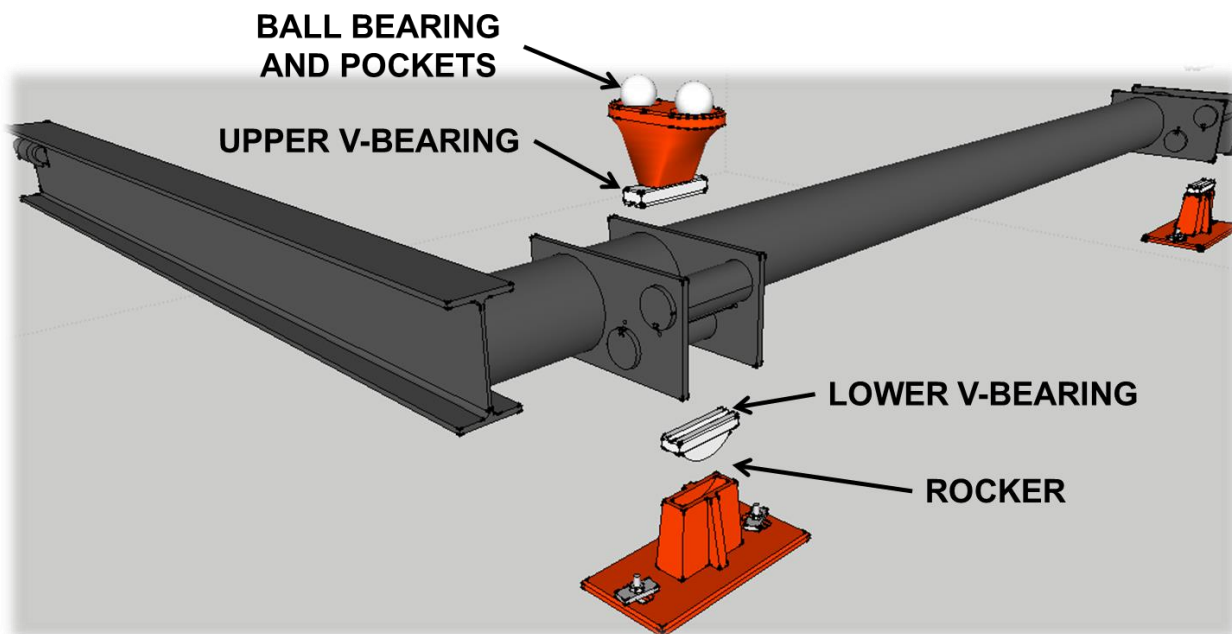
4.2. CLEANING

All moving parts need to be kept free and clear of any debris that may inhibit movement or accelerate wear. All pivot and bearing locations should be inspected for accumulation of debris. Clean all parts as required.



Check under the weighbridge for accumulation of mud or other debris that will trap moisture on the steel structure. All steel surfaces should be washed down to prevent corrosion.

4.3. LUBRICATION



After all the components are properly cleaned, generously lubricate all moving contact points with lithium-based heavy bearing grease. Fully enclose the working parts within a protective shell. See key lubrication points above:

4.4. REPLACE WEAR PARTS

The pivots and bearings supplied with this scale are made from hardened, aircraft grade, high strength alloy steel. However, after much use the pivots and bearings will eventually develop some wear. In order to keep your scale weighing accurately, you should replace pivots, bearings, and other moving parts. We recommend the complete overhaul kit every 200,000 weighments. This kit includes all pivots and bearings as well as suspension components.

(Replacement schedule will vary from scale to scale. Many factors including load patterns, cleanliness, weather, and lubricant will affect actual lifecycle of these parts.)

4.5. CALIBRATION

No maintenance program is complete without calibration. Any time you perform these maintenance procedures, you should check the calibration of your scale. Give your scale proven accuracy by performing a complete section calibration. See Section 3 for more calibration details.

Section 5: Parts

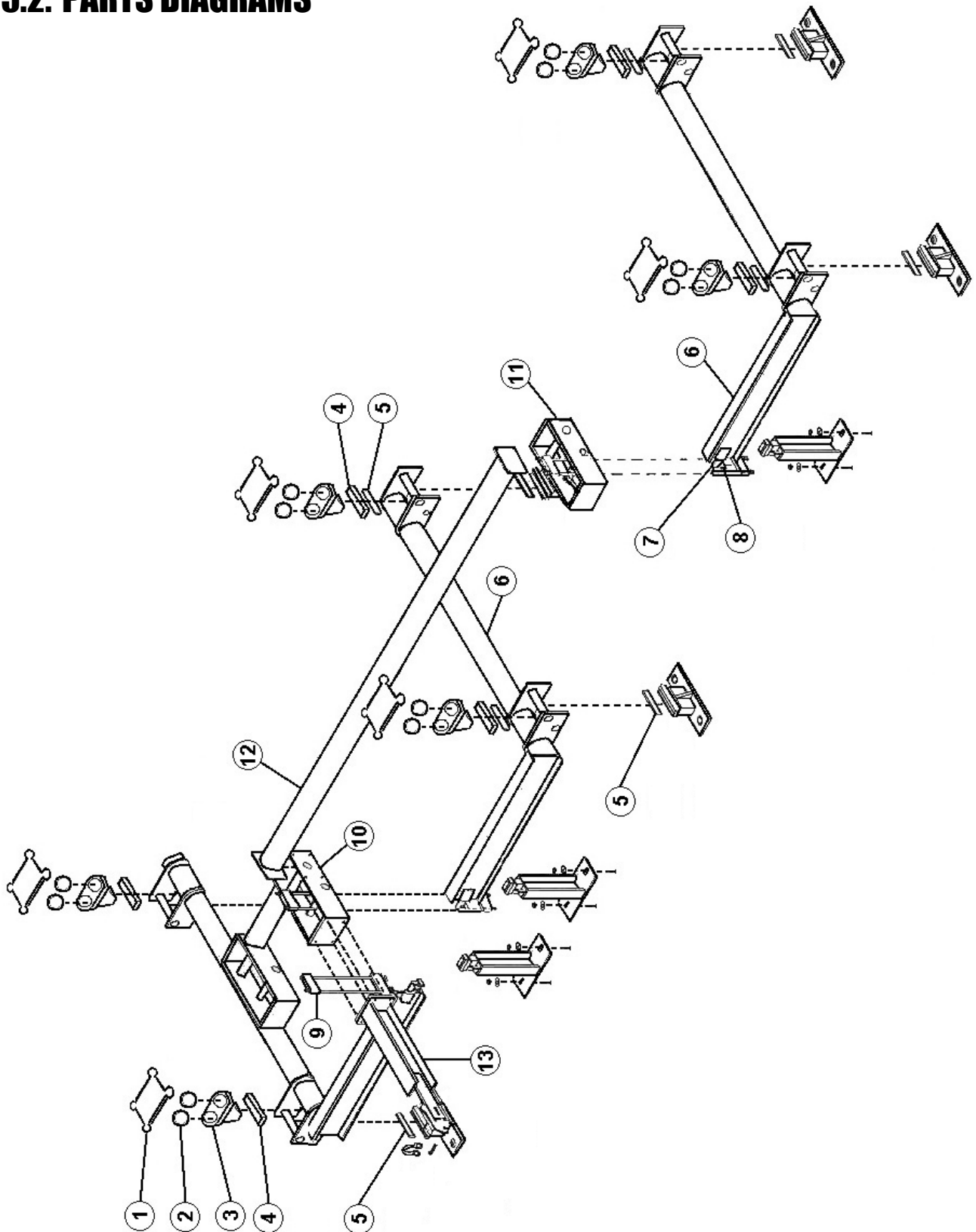
5.1. PARTS LIST

Item#	Part#			Description
	60K	90K	120K	
1	65643	—	—	BALL PLATE, 7.88"x5.88"x1.25"
	—	64989	64989	BALL PLATE, 13"x8"x1.5"
2	65294	—	—	BALL BEARING, 2.5"
	—	65855	65855	BALL BEARING, 3"
3	65288	—	—	BALL BLOCK, 7.75"x4"x4"
	—	64960	64960	BALL BLOCK, 11"x4.75"x6.25
4	65298	—	—	UPPER BEARING, 5.63"
	—	65621	65621	UPPER BEARING, 7.63"
5	65319	—	—	PIVOT KE, 1"x.5"x5.69" (MAIN LEVER)
	—	65610	65610	PIVOT KE, 1"x.5"x7.75" (MAIN LEVER)
6				MAIN LEVER **
7	65646	65646	65646	NOSE IRON, 2.19"DIA. x 10"L (MAIN LEVER)
8	65647	65647	65647	PIVOT KE, 1"x.5"x1.88" (MAIN LEVER)
9	65880	—	—	SHACKLE ASSY, 10.94"
	—	66433	66433	SHACKLE ASSY, 12.25"
10	65863	65863		CONNECTION BOX for TRANSVERSE LEVER, 6"
	—	—	83331	CONNECTION BOX for TRANSVERSE LEVER, 8"
11	65872	65872	—	CONNECTION BOX, 6"
	—	—	83330	CONNECTION BOX, 8"
12				BACKBONE PIPE **
13	65905	65905	—	TRANSVERSE LEVER, 3/8"x3/4"
	—	—	65911	
*	—	76204	76204	DOWEL PIN, 3/8"x1.88"
	65305	—	—	DOWEL PIN, 3/8"x1.75"

* Connects to **ITEM 3 and 4.**

** The **Backbone and Main Levers** each have numerous model sizes. Please contact Solutions to order the needed part(s).

5.2. PARTS DIAGRAMS



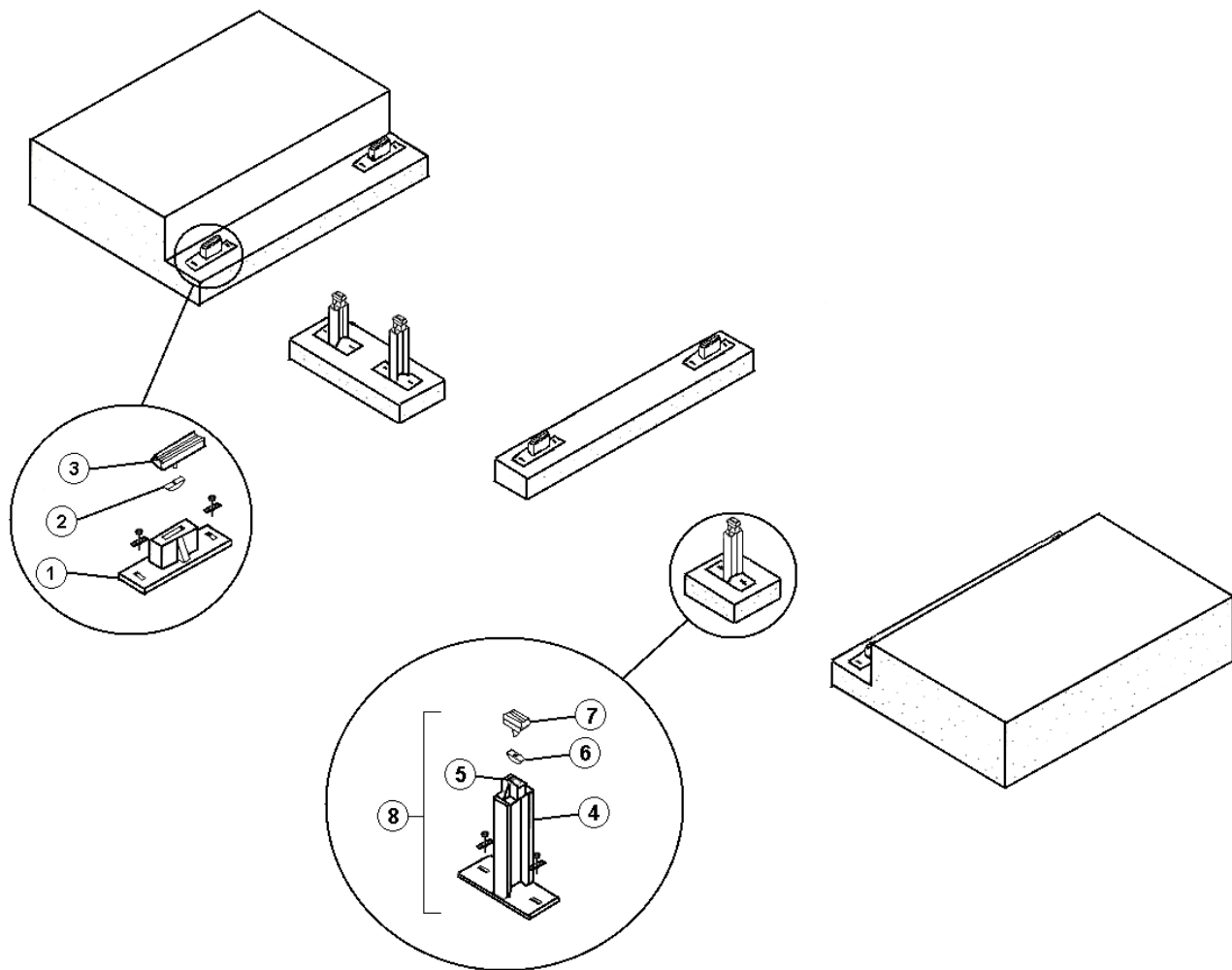
5.3. CORNER & FULCRUM STAND PARTS LIST

Corner & Fulcrum Stand Parts List				
Item#	Part#			Description
	60K	90K	120K	Main Lever Corner Stand
1	64827	—	—	CORNER STAND, 15"x8"x5.25"
	—	64966	64966	CORNER STAND, 20"x10"x7.5"
2	65280	—	—	ROCKER, 3.25"
	—	65856	65856	ROCKER, 6"
3	65282	—	—	V-BEARING, LOWER, 5.63"
	—	65624	65624	V-BEARING, LOWER, 7.63"

Backbone Pipe Fulcrum Stand

4	65860	65860	—	FULCRUM STAND, 17" PIVOT LINE
	—	—	65901	FULCRUM STAND, 21" PIVOT LINE
5	65858	65858	65858	CORNER STAND, BACKBONE
6	65280	65280	65280	ROCKER, 3.25"
7	65903	65903	65903	LOWER V-BEARING, 3.63"
8	68075	68075	—	FULCRUM STAND ASSY, 17" PIVOT LINE
	—	—	64957	FULCRUM STAND ASSY, 21" PIVOT LINE

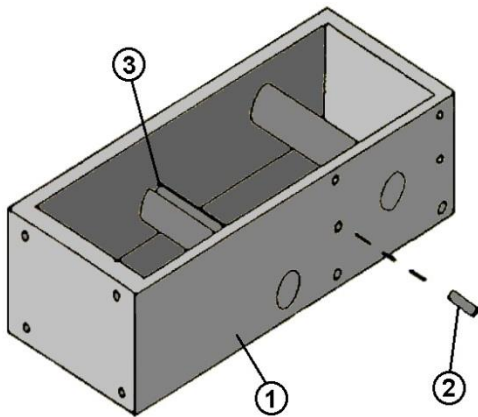
5.4. CORNER & FULCRUM STAND PARTS DIAGRAM



5.5. CONNECTION BOX PARTS LIST

Item#	Part#			Description
	60K	90K	120K	
1	65863	65863	—	CONNECTION BOX for TRANSVERSE LEVER, 6"
	—	—	83331	CONNECTION BOX for TRANSVERSE LEVER, 8"
	65872	65872	—	CONNECTION BOX, 6"
	—	—	83330	CONNECTION BOX, 8"
2	64824	64824	—	DOWEL PIN, 1"X2"
	—	—	66353	DOWEL PIN, 5/8"X 1"
3	65628	65628	—	PIVOT KE, 1"X ½"X 3 ¾"
	—	—	65610	Pivot KE, 1"X ½"X 7 ¾"

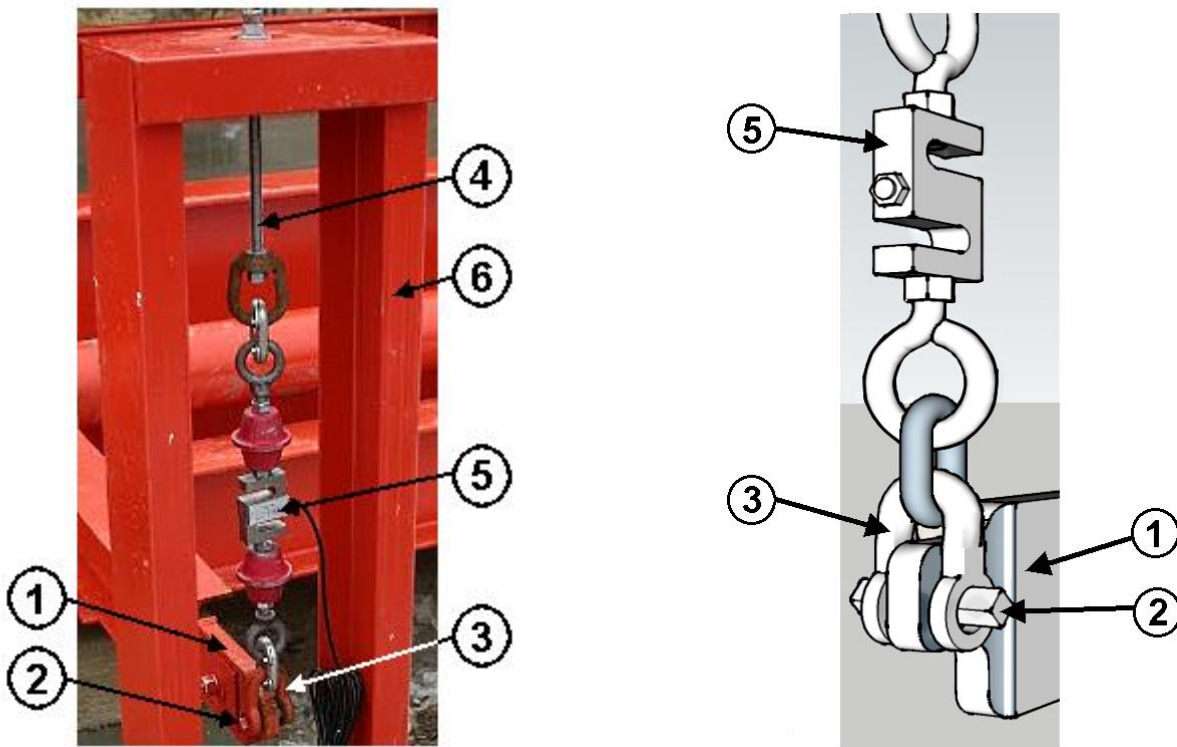
5.6. CONNECTION BOX PARTS DIAGRAM



5.7. LOAD CELL ASSEMBLY PARTS LIST

Item#	Part#		Description
	60K & 90K	120K	
1	65877	65877	NOSE IRON, 8"X 4 ½"X1"
2	65879	65879	SQUARE PIVOT, ½"X ½"X2 ¾"
3	66537	66537	LOOP, 2 ½" SPREAD
4	66657	66657	INSTALLATION KIT
5	11646	—	LOAD CELL, 1K
	—	95961	LOAD CELL, 1.5K
6	66187	66187	LOAD CELL PILLAR

5.8. LOAD CELL ASSEMBLY PARTS DIAGRAM



Appendix I: Photos from a Completed Site



The assembled Weighbridge



Load Cell Assembly



Corner Stand Assembly



Adjusting the Nose Iron



Manufactured by **Thurman Scale**
4025 Lakeview Crossing
Groveport, OH 43215
www.thurmanscales.com

50726

Mechanical Truck Scale

Models 8130 & 8140

Service Manual